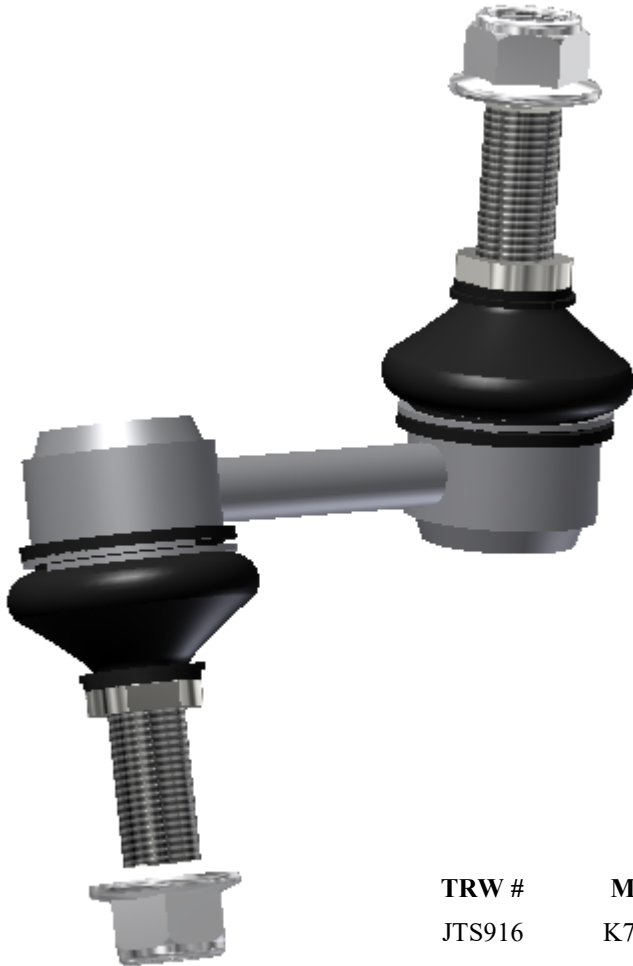


# BAR-30075165

## Heavy Duty Sway Bar Link



New Bar



**Heavy duty design for rugged condition.  
 Sealed boot design to eliminate contaminants  
 from entering the bearing surfaces.  
 Wrench flats for trouble-free installation.**

**Improved Design!**

TRW #	Moog #	OE #
JTS916	K750093	51321SEPA01

**APPLICATIONS:**

Year	Make	Model	Location	Qty / Vehicle
2007—2014	Acura	TL	Front Left	1

Manufactured in the



**2016**

**2016**