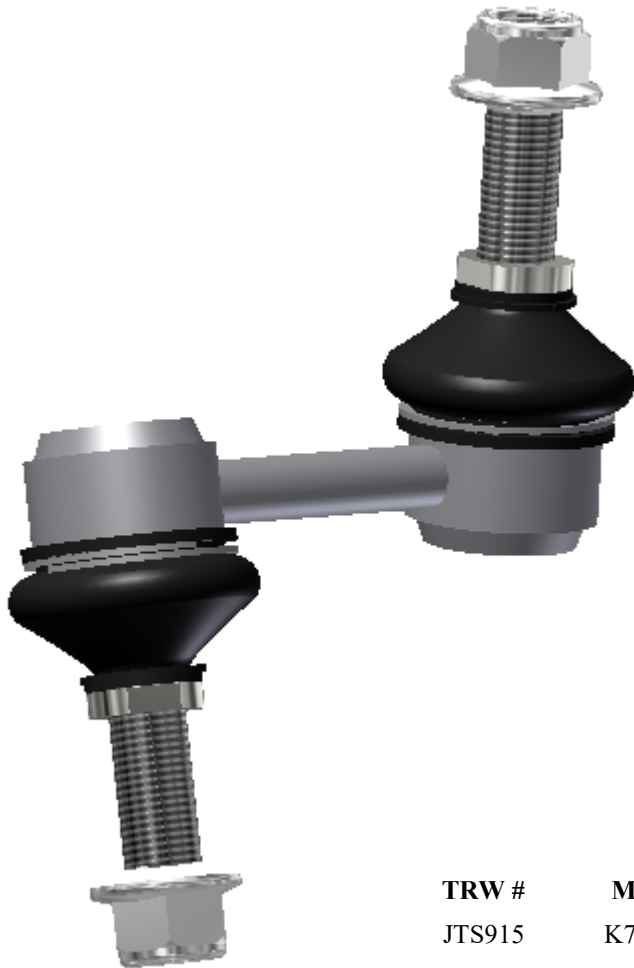


BAR-30075195

Heavy Duty Sway Bar Link



New Bar



Heavy duty design for rugged condition.
 Sealed boot design to eliminate contaminants
 from entering the bearing surfaces.
 Wrench flats for trouble-free installation.

Improved Design!

TRW #	Moog #	OE #
JTS915	K750092	51320SEPA01

APPLICATIONS:

Year	Make	Model	Location	Qty / Vehicle
2007—2016	Acura	TL	Front Right	1

Manufactured in the



2016

2016