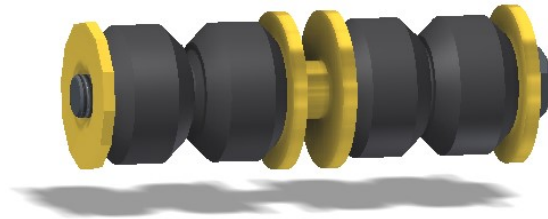


EF-460

Easy-Fit

Heavy Duty Stabilizer Link

Chrysler Products



ALSO AVAILABLE AS STANDARD LINE SL460

Front Suspension	O.E. #:	(2) Per Vehicle	
	5272324AB 5272324AC		
Napa #	McQuay #	Moog #	TRW #
265-1416	SL-325	K7348 / K700525	18267HD

APPLICATIONS:

Year	Make	Model	Suspension	Qty / Vehicle	Year	Make	Model	Suspension	Qty / Vehicle
2001 - 2010	Chrysler	PT Cruiser	F	2	1986-1994	Mazda	323	F	2
2005 - 2010	Chrysler	PT Cruiser - Convertible		2	1981-1985	Mazda	GLC (sedan/hatchback)	F	2
2000 - 2005	Dodge	Neon	F	2	1981-1986	Mazda	GLC (station wagon)	F	2
2000 - 2001	Plymouth	Neon	F	2	1990-1994	Mazda	Protégé	F	2
1979-1982	Datsun	310	F	2	1984-1988	Nissan	200SX	F	2
1977-1981	Datsun	810	F	2	1979-1983	Nissan	280SX	F	2
1980-1982	Datsun	F10	F	2	1984-1986	Nissan	300ZX	F	2
1980-1982	Datsun	Truck 720	F	2	1986-1994	Nissan	D21	F	2
1994-1995	Honda	Passport	F	2	1981-1988	Nissan	Maxima	F	2
1989-1994	Isuzu	Amigo	F	2	1984-1986	Plymouth	Conquest	F	2
1988-1995	Isuzu	Pickup	F	2	1985-1988	Toyota	Cressida	F	2
1991-1995	Isuzu	Rodeo	F	2	1992-1997	Toyota	Paseo	F	2
1987-1991	Isuzu	Trooper	F	2	1991-1998	Toyota	Tercel	F	2

