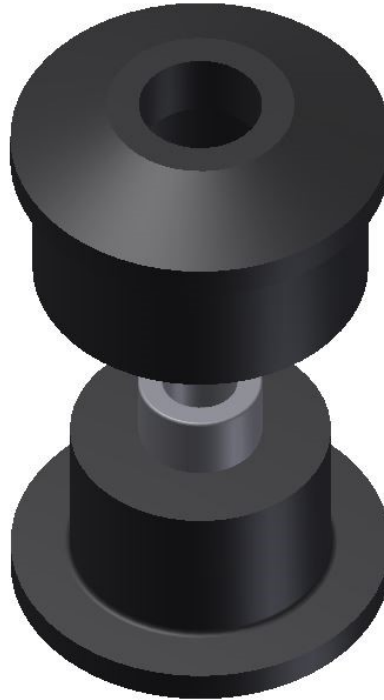


HP-322

New RAMCOA Control Arm Bushings!



- Easy Installation!*
- Longer control arm life!*
- Improves vehicle dynamic characteristics*
- Maintains accurate alignment*
- Reduces road vibration*
- Ensures comfortable ride*

- Compliance bushing
- Front Lower Control Arm; L&R
- Better material property than OEM rubber

Location	Year	Make	Model	Trim
Front Lower Forward; L&R	2006-2010	KIA	OPTIMA	ALL

O.E. # : 545842G000, 545512H000, 545843F6000

Napa

McQuay

Moog

TRW

